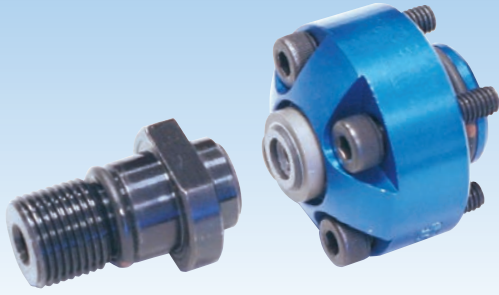


DEUBLIN

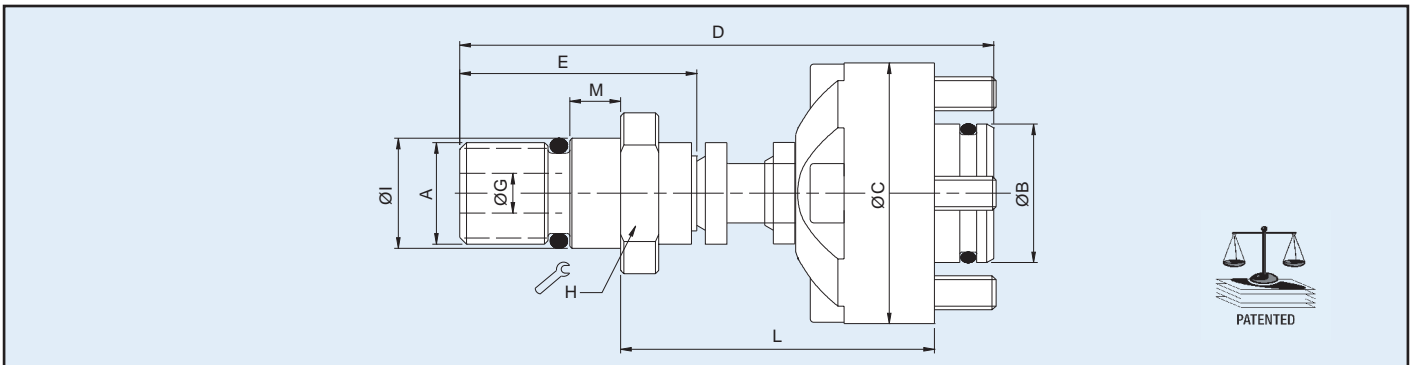
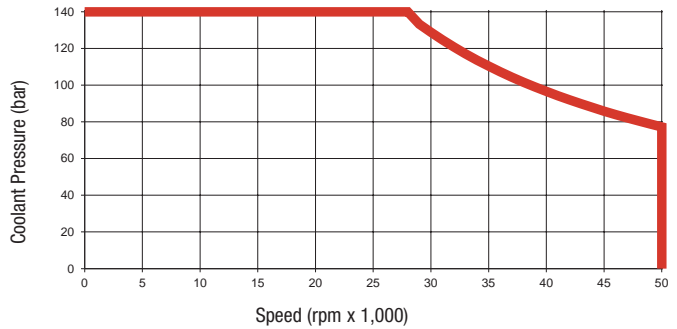
1154 Series Bearingless AutoSense™ “Long Stroke” Rotating Unions for Coolant and Air Service

- Single passage for coolant or MQL
- Patented AutoSense™ technology automatically changes between closed seals and controlled leakage operation in response to the kind of media
- Non-rotating element has a “stroke” (axial movement) of more than 8 mm, to track drawbar movement even when union is mounted on the clamping device
- Full-flow design has no obstructions to trap swarf or debris
- Balanced mechanical seals made from silicon carbide for long life even under difficult operating conditions
- Anodised aluminium housing resists corrosion



Operating Data

Media	Water-based Coolant MQL (oil mist) up to 10 bar (145 psi) Air up to 10 bar (145 psi)	
Filtration	ISO 4406 Class 17/15/12, max. 60 micron	
Max. Speed	50,000 min ⁻¹	50,000 rpm
Max. Pressure	140 bar	2,031 psi
Max. Flow	24,3 l/min	6.4 gpm
Max. Temperature	71 °C	160 °F



	Ordering Number	B Supply Connection	C Overall Diameter	D Overall Length ^B	L Mounting Distance	A Rotor Connection	E Rotor Length	G Bore Diameter	H Across Flats	I Pilot Diameter	M Pilot Length	Max. Speed (rpm)
Axial Connection	1154-002-105	16.4 Counterbore	31	72	49.0 / 42.0	M8 x 1 RH	37	4	15	8.995 / 8.991	3.5	50,000
	1154-002-109	16.4 Counterbore	31	63	37.0 / 30.0	M12 x 1 RH	28	5	15	12.994 / 12.989	6	50,000
	1154-002-133	16.4 Counterbore	31	65	37.0 / 30.0	M16 x 1.5 LH	30	4	19	17.994 / 17.989	6	50,000
	1154-002-140	16.4 Counterbore	31	63	37.0 / 30.0	M12 x 1.25 LH	28	5	15	12.994 / 12.989	6	50,000
	1154-003-107	20 Counterbore	39	71	40.0 / 33.0	M12 x 1.25 LH	36	5	15	12.994 / 12.989	6	50,000
	1154-003-137	20 Counterbore	38.5	62	31.0 / 25.0	M12 x 1.25 LH	27	5	15	12.994 / 12.989	6	50,000
	1154-004-109	30 Counterbore	48.5	69	42.0 / 35.0	M12 x 1 RH	28	5	15	12.994 / 12.989	6	50,000
	1154-005-109	16.4 Counterbore	31	87	49.0 / 42.0	M12 x 1 RH	28	5	15	12.994 / 12.989	6	50,000
	1154-012-109 ^A	16.4 Counterbore	31	63	37.0 / 30.0	M12 x 1 RH	28	5	15	12.994 / 12.989	6	50,000
1154-012-133 ^A	16.4 Counterbore	31	65	37.0 / 30.0	M16 x 1.5 LH	30	5	19	17.994 / 17.989	6	50,000	

Note A: 1154-012-xxx includes a spring to fully retract the non-rotating element when pressure is discontinued.

Note B: Overall Length (D) is at maximum Mounting Distance (L).

【信德迈科技(北京)有限公司是美国Deublin杜博林旋转接头正式授权十年北方地区最大代理商】

产品选型资料及更详细产品介绍请点击：<http://www.cnmec.net>