



## Description

The SRC-40 is a reliable, cost-effective, and proven product that seeks to provide the consumer with maximum efficiency in terms of modularity. A slip ring particularly suited for being equipped with fluidic Rotary Unions. This product is suitable for signal or power passage up to a max of 60 A. Terminal blocks both on stator and rotor side allow an easy and quick connection/disconnection.

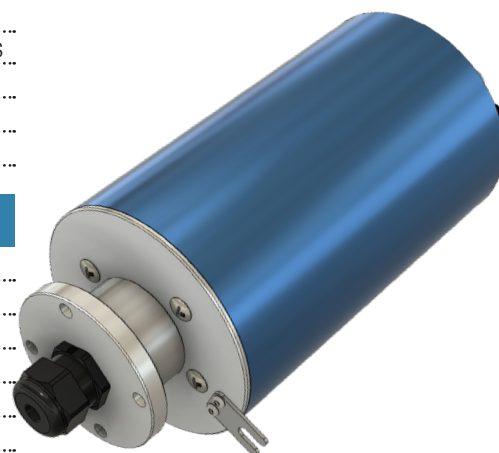
Model Family	Industry	Application
<b>SRC-40</b>	<b>Packaging, Wind Energy</b>	<b>Packaging, Automation, Rotary Table, Wind Turbine</b>

### Electrical Features

Max. Composition	99 rings
Voltage, max	880 V AC/DC for power – 190 V DC for signal
Current, max steady state	60 A power, 5 A signal
Data Communication Speed	Up to 100 Mbps for signal
Conductor Ring	Gold Plated Copper Alloy
Brush Contact	Alloy monofilament or polyfilament/Carbon Brushes
Wiring	10 mm <sup>2</sup> power / 0,34 mm <sup>2</sup> signal
Connection, stator	Connector / Flying leads
Connection, rotor	Connector / Flying leads

### Mechanical Features

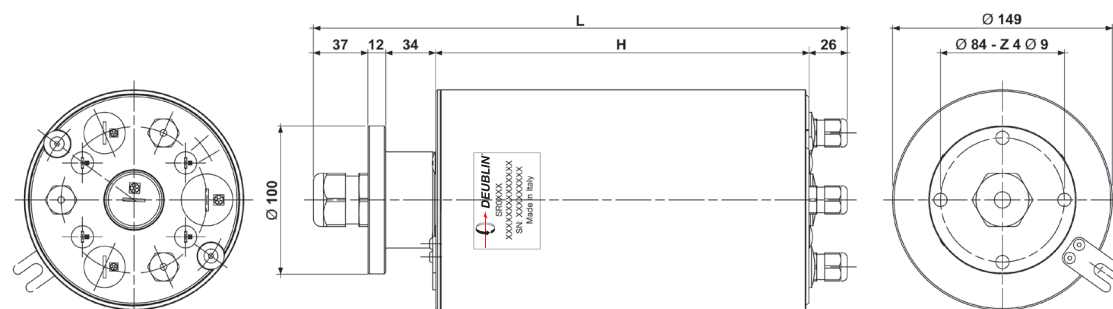
Speed, max.	250 up to 1,500 RPM
Direction of Rotation	Bi-Directional
IP Rating	Standard IP55 – Max. IP68
Mounting Orientation	Vertical or Horizontal
Temperature, operating	-20° C to +80° C
Temperature, storage	-40° C to +90° C
Material, housing	Anodized Aluminum
Material, rotor	Anodized Aluminum
Material, cover	Anodized Aluminum



### Versions

SRC-40 (standard) Cordgrip connection both on rotor and stator side, 3 m flying leads

Options Thru Bore Passage, Cord Grips, Mounting Flanges, Painted covers, flying lead length, customized anti-rotation, internal heater for low temperature applications



SIZE	L	H
SRC-40 S	262	153
SRC-40 M	362	253
SRC-40 L	462	353

For more information, visit [www.deublin.eu](http://www.deublin.eu)