

## Slip Rings Product Overview

### Slip Rings & Rotary Unions: Product Portfolio

#### Slip Rings

Wide range for the transmission of data, signal and power

#### Rotary Unions

For air, hydraulic, water and other fluids

#### Combinations (Tandem)

Combined solutions of Slip Ring and Rotary Union for power and media



### Slip Rings: The Technology

#### Monofilament Technology

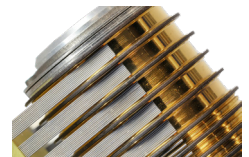
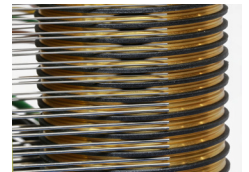
Low contact resistance, low abrasion; for signal and data transmission also for current up to 25A

#### Polyfilament Technology

Very low contact resistance; for the transmission of signal and high data rate

#### Graphite composite brushes

Longer life, high speed; for high current from 30 to over 100A; speed up to 1,500 rpm;



### Slip Rings: It's all in the details

#### Conductor Rings

Gold coated, pure copper inside, manufactured with high precision, no oxidation, very low contact friction

#### Precise coating

Application of precious metal only where it is necessary; Coating optimized in type, class and hardness



### Slip Rings: Performance in Rotation

#### Transmission speed up to

**100 Mbps** protocols such as Ethernet, EtherCAT, Profinet, Powerlink and others

#### Speed up to 1,500 rpm

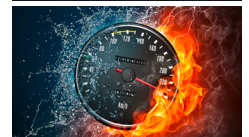
Continuous rotation or according to work cycles

#### Current up to 100 AMPS

Direct or alternating current

#### Voltage up to 1,000 V AC\* and 1,500 V DC\*

\* according to the Low Voltage Directive 2014/35/UE



### Areas of application

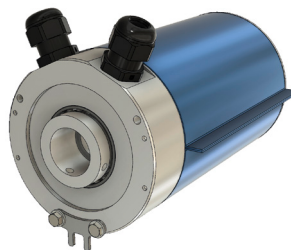
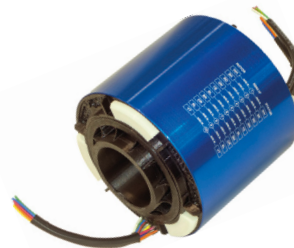
Wind turbines  
Semiconductor  
Automation  
Industrial washing systems

Packaging  
Printing technology  
Smoothing units  
Machine tools

Horizontal drilling technology  
Mold making  
Injection molding  
Welding technology

**SRC**

**SRD**

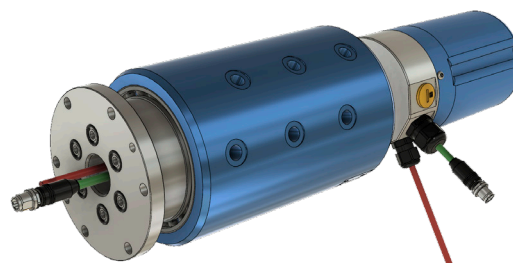
**SRH**

**SRT**


## Slip Ring Family

| Series              | SRC                                     | SRD                                    | SRH                                      | SRT                                      |
|---------------------|---|--|--|--|
| Features            | axial cable outlet on the housing       | radial cable outlet on the housing     | with central bore                        | with central bore                        |
| Electrical Channels | up to 99                                | up to 40                               | up to 50                                 | up to 72 (signal)                        |
| Current, max        | 5 A signal; 60 A power                  |  | 1 A signal;<br>10/20/50/100 A power      | 5 A signal; 10 A power                   |
| Data Commun. Speed  | 100 Mbps                                |  | RS485/CanOpen/ProfiBus                   | 100 Mbit/s                               |
| Conductor Ring      | gold coated                             |  | bronze / silver coated                   | silver / gold coated                     |
| Brushes up to 25 A  | Monofilament (<=25 A); Graphite (>25 A) |  | Metal / Silver graphite                  | –  |
| Central bore        | only SRC-40                             | only SRD-40                            | –  | –  |
| Protection class    | IP 55 – max IP 68                       | IP 55 – max IP 67                      | IP 55                                    | IP 51 – max IP 68                        |
| Speed, max          | 1,500 rpm                               | 250 rpm                                | 60 rpm                                   | 250 rpm                                  |
| Voltage, nominal    | Voltage 880 V AC/DC;<br>Signal 190 V DC | Voltage 640 V AC/DC;<br>Signal 30 V DC | Voltage 0-500 V AC/DC;<br>Signal 30 V DC | Voltage 0-600 V AC/DC;<br>Signal 30 V DC |

## Combo

| Series            | S  | L     |
|-------------------|--|-------|
| Features          | consists of MPSS Rotary Union and Slip Ring SRC / SRD series                   |       |
| Media passages    | 1 - 2 - 4  | 6 - 8 |
| Passage dimension | Ø 6 - Ø 10 - Ø 12 mm   |       |
| Fluids            | depending on the design: air, vacuum, hydraulics, water (reduced service life) |       |
| Speed             | for slow speeds  |       |
| Central bore      | 30 mm for wire   |       |
| Flange connection | yes  |       |
| Drainage          | between the channels   |       |



For more information, visit <https://www.deublin.com>

**Deublin-杜博林签约中国代理商: 信德迈科技 (北京) 有限公司**  
地址: 北京朝阳区望京 SOHO-T1-C 座 2115 室 邮编: 100102  
手机: 139 1096 2635 电子邮件: [sales@cnmec.biz](mailto:sales@cnmec.biz)