

DEUBLIN

1108 Series "Closed Seal" Rotating Unions for Continuous Coolant Service

- Single passage for coolant or MQL
- Closed seals for transfer line and similar applications
- Full-flow design has no obstructions to trap swarf or debris
- Bearing-supported with threaded rotor for easy installation
- Dual ABEC 7 (ISO class P4) angular contact ball bearings
- Labyrinth system and large vents to protect ball bearings
- Balanced mechanical seals made from silicon carbide for long life even under difficult operating conditions
- Aluminium housing, endcap anodised resists corrosion

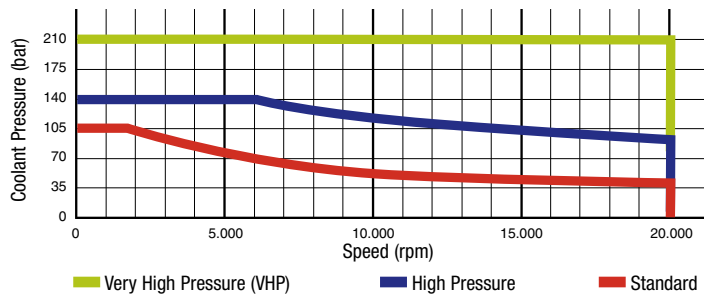


Operating Data

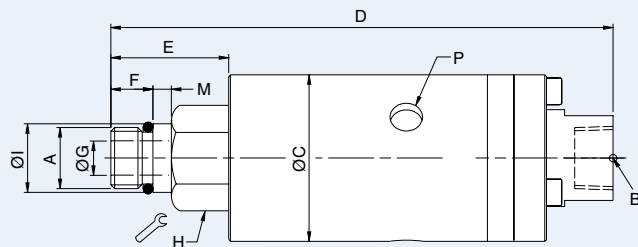
Media	Water-based Coolant MQL (oil mist) up to 10 bar (145 psi)		
Filtration	ISO 4406 Class 17/15/12, max. 60 micron		
Max. Speed	20.000 min ⁻¹ 20,000 rpm		
Max. Pressure	see chart		
Max. Flow	82 l/min	21.6 gpm	Standard
	24,3 l/min	6.4 gpm	High Pressure
	2,7 l/min	0.7 gpm	Very High Pressure (VHP)
Max. Temperature	70°C	160°F	



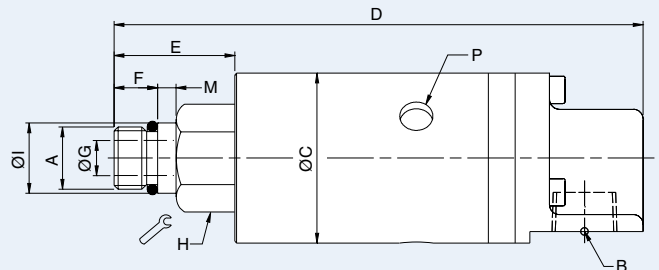
DO NOT RUN DRY



Axial Connection



Radial Connection



	Ordering Number	B Supply Connection	C Overall Diameter	D Overall Length	P Vent Size Ø (3 x 120°)	A Rotor Connection	E Rotor Length	F Thread Length	G Bore Diameter	H Across Flats	I Pilot Diameter	M Pilot Length
Standard	1108-002-102	3/8 NPT Axial	44	132	9	5/8-18 UNF LH	34	14	9	15/16"	0,6555" / 0,6553"	5
	1108-002-153	3/8 NPT Axial	44	132	9	M16 x 1,5 LH	31	11	9	24	17,993 / 17,988	5
	1108-032-153	G 3/8 Axial	44	129	9	M16 x 1,5 LH	31	11	9	24	17,993 / 17,988	5
	1108-001-102	3/8 NPT Radial	44	138	9	5/8-18 UNF LH	34	14	9	15/16"	0,6555" / 0,6553"	5
	1108-001-153	3/8 NPT Radial	44	135	9	M16 x 1,5 LH	31	11	9	24	17,993 / 17,988	5
	1108-011-153	G 3/8 Radial	44	135	9	M16 x 1,5 LH	31	11	9	24	17,993 / 17,988	5
High Pressure	1108-019-107	1/4 NPT Axial	44	132	9	5/8-18 UNF LH	34	14	9	15/16"	0,6555" / 0,6553"	5
	1108-019-212	1/4 NPT Axial	44	129	9	M16 x 1,5 LH	31	11	9	24	17,993 / 17,988	5
	1108-034-212	G 1/4 Axial	53	129	G 1/4	M16 x 1,5 LH	31	11	9	24	17,993 / 17,988	5
	1108-058-212	G 1/4 Radial	53	135	G 1/4	M16 x 1,5 LH	31	11	9	24	17,993 / 17,988	5
VHP	1108-093-559	1/4 NPT Axial	44	132	9	M16 x 1,5 LH	31	11	9	24	17,993 / 17,988	5
	1108-093-568	1/4 NPT Axial	44	132	9	5/8-18 UNF LH	34	14	9	15/16"	0,6555" / 0,6553"	5