

DEUBLIN

1005 Series "Closed Seal" Rotating Unions for Continuous Coolant Service

- Single passage for coolant or MQL
- Closed seals for transfer line and similar applications
- Full-flow design has no obstructions to trap swarf or debris
- Bearing-supported with threaded rotor for easy installation
- Labyrinth system and vents to protect ball bearings
- Balanced mechanical seals made from silicon carbide for long life even under difficult operating conditions
- Anodised housing and stainless steel rotor resist corrosion

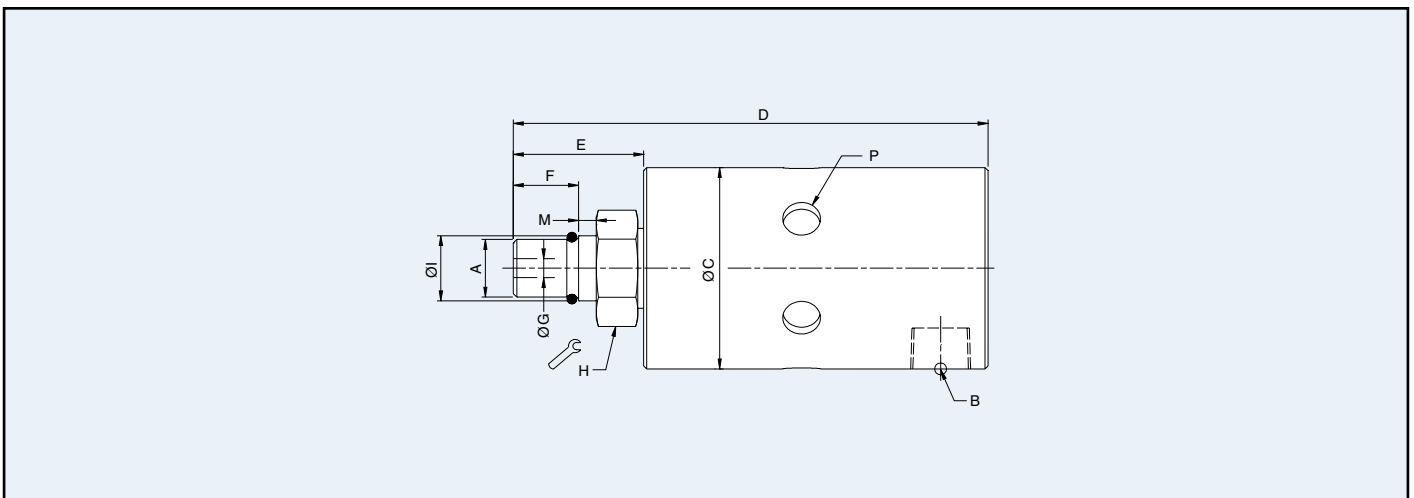
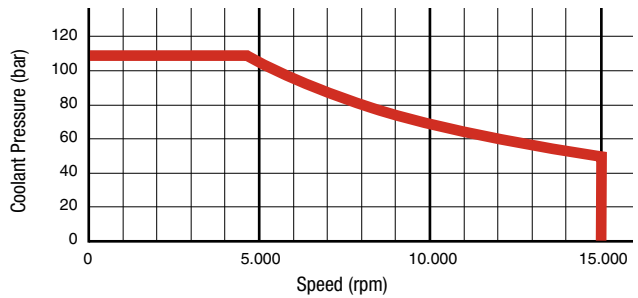


Operating Data

Media	Water-based Coolant MQL (oil mist) up to 10 bar (145 psi)	
Filtration	ISO 4406 Class 17/15/12, max. 60 micron	
Max. Speed	15.000 min ⁻¹	15,000 rpm
Max. Pressure	105 bar	1,520 psi
Max. Flow	6,7 l/min	1.8 gpm
Max. Temperature	70°C	160°F



DO NOT RUN DRY



Other 1005 models are available for use with oil or dry air. Please refer to the *DEUBLIN* Engineering Catalogue 2600.

	Ordering Number	B Supply Connection	C Overall Diameter	D Overall Length	P Vent Size Ø (6 x 60°)	A Rotor Connection	E Rotor Length	F Thread Length	G Bore Diameter	H Across Flats	I Pilot Diameter	M Pilot Length
Rad. Conn.	1005-402-401	1/8 NPT	34	80	6,4	M10 x 1 RH	22	11	3.2	17	11.000 / 10.989	3
	1005-402-448	1/8 NPT	34	80	6.4	M10 x 1 LH	22	11	3.2	17	11.000 / 10.989	3
	1005-633-401	1/8 NPT	34	80	1 x M7	M10 x 1 RH	22	11	3.2	17	11.000 / 10.989	3