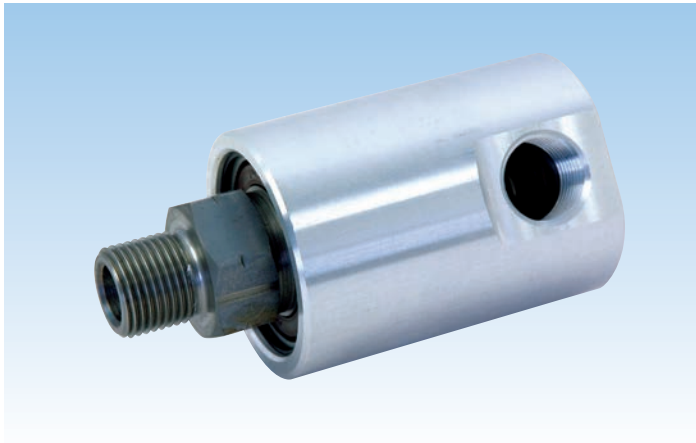


DEUBLIN

7000 and 1115 Series "Controlled Leakage" Rotating Unions for Dry Air or Vacuum at High Speed

- Single passage for dry or lubricated air
- Bearings are lubricated for life
- Full-flow design has no obstructions to trap swarf or debris
- Threaded rotor for easy installation
- Balanced mechanical seals made from silicon carbide for long life even under difficult operating conditions
- Aluminium and stainless steel parts resist corrosion

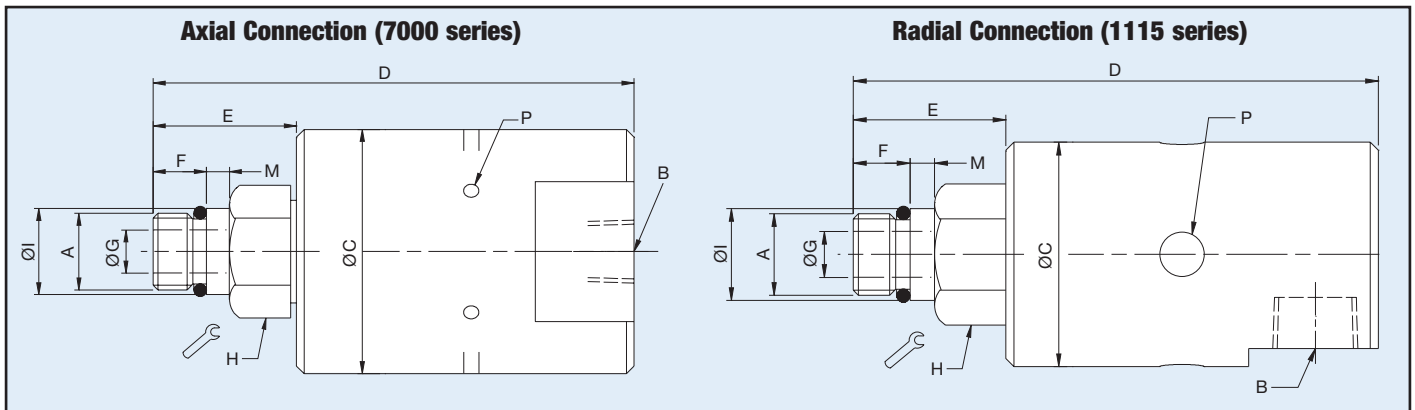


Operating Data

Media	Compressed Air	
7000-027-468	Vacuum	
Max. Speed		
1115-114-xxx	15.000 min ⁻¹	15,000 rpm
1115-680-xxx	15.000 min ⁻¹	15,000 rpm
7000-xxx-xxx	18.000 min ⁻¹	18,000 rpm
Max. Pressure	10 bar	145 psi
Max. Flow		
1115-114-xxx	2.460 NI/min	87 SCFM
1115-680-xxx	2.460 NI/min	87 SCFM
7000-xxx-xxx	1.060 NI/min	37 SCFM
Max. Temperature	120 °C	250 °F



DRY AIR SERVICE



	Ordering Number	B Supply Connection	C Overall Diameter	D Overall Length	P Vent Size Ø (6 x 60°)	A Rotor Connection	E Rotor Length	F Thread Length	G Bore Diameter	H Across Flats	I Pilot Diameter	M Pilot Length
Axial Connection	7000-003-117	¼ PT	51	97	3	M16 x 1.5 RH	26	11	6	24	17.993 / 17.988	5
	7000-003-118	¼ PT	51	97	3	M16 x 1.5 LH	26	11	6	24	17.993 / 17.988	5
	7000-003-224	¼ PT	51	100	3	5/8-18 UNF RH	30	14	6	15/16"	0.6555" / 0.6553"	5
	7000-003-225	¼ PT	51	100	3	5/8-18 UNF LH	30	14	6	15/16"	0.6555" / 0.6553"	5
	7000-027-468 ^A	¾ NPT	51	100	3	5/8-18 UNF LH	30	14	9	15/16"	0.6555" / 0.6553"	5

	Ordering Number	B Supply Connection	C Overall Diameter	D Overall Length	P Vent Size Ø (4 x 90°)	A Rotor Connection	E Rotor Length	F Thread Length	G Bore Diameter	H Across Flats	I Pilot Diameter	M Pilot Length
Radial Conn.	1115-114-402	G ¾	44	106	9	5/8-18 UNF LH	33	14	9	15/16"	0.6555" / 0.6553"	5
	1115-114-583	G ¾	44	103	9	M16 x 1.5 LH	30	11	9	24	17.993 / 17.988	5
	1115-680-402	¾ NPT	44	106	9	5/8-18 UNF LH	33	14	9	15/16"	0.6555" / 0.6553"	5
	1115-680-403	¾ NPT	44	106	9	5/8-18 UNF RH	33	14	9	15/16"	0.6555" / 0.6553"	5

Note A: Modell 7000-027-468 is designed for vacuum and compressed air service.