

DEUBLIN

Bearingless Rotating Union Cartridge Design Compact Bearingless Rotating Union for smallest installation space

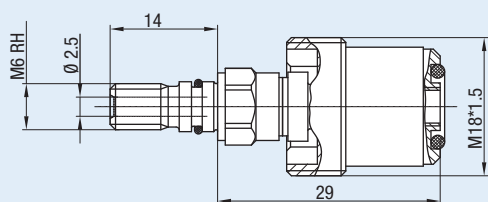
- Single passage available with almost all sealing technologies
- Design with additional functions: e.g. long stroke stator with hub to allow drawbar movement even when rotating union is mounted onto the clamping unit
- Full-flow design has no obstructions to trap swarf or debris
- Balanced mechanical seals made from silicon carbide / carbon graphite for timed dry run for long life
- Anodised aluminium housing resists corrosion
- Dry run capability depending on sealing technology and materials

Operating Data

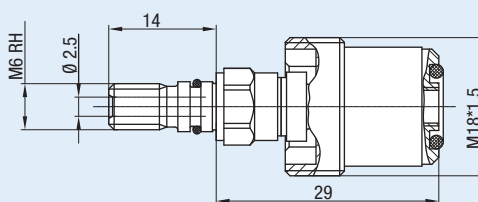
Sealing Technology (depending on model) AutoSense™, Closed Seal, Pop-Off™
Media (depending on model) Coolant – water-based;
Cutting Oil
Compressed Air up to 10 bar, up to 145 psi
MQL (oil mist) up to 10 bar, up to 145 psi

Examples

1121-251-434



1117-593-589



Features

- Pop-Off™
- Single passage
- Seals SIC/SIC

Operating Data

Speed	150,000 rpm
Pressure	180 bar
Media	Coolant / Cutting Oil
Dry run	Yes
Max. Flow	7.4 l/min

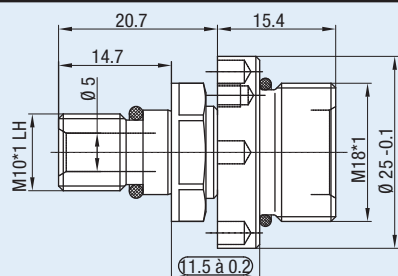
Features

- Closed Seal
- Single passage
- Seals CG/SIC

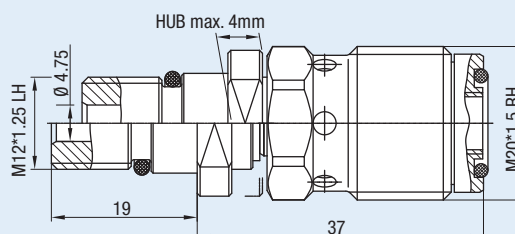
Operating Data

Speed	30,000 rpm
Pressure	140 bar
Media	Coolant / Cutting Oil
Dry run	No
Max. Flow	7.4 l/min

1124-259-260



1154-170-137



Features

- AutoSense™
- Single passage
- Seals SIC/SIC

Operating Data

Speed	30,000 rpm
Pressure	140 bar / 10 bar
Media	Coolant / Compressed Air
Dry run	Yes
Max. Flow	7.4 l/min

Features

- AutoSense™
- Single passage
- Seals SIC/SIC
- Hub max. 4 mm

Operating Data

Speed	40,000 rpm
Pressure	140 bar / 10 bar
Media	Coolant / Compressed Air
Dry run	Yes
Max. Flow	7.4 l/min